

ADC

American Dryer Corp.



AD-330/AD-320

ADC STACKED TUMBLERS

The AD-330 and AD-320 are the first dual pocket dryers available in gas, electric, and steam heat.

We ensure the highest quality possible with our unique modular design concept.

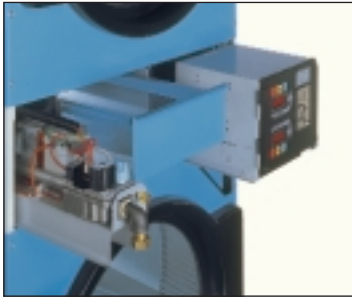
All components are tested as individual components before assembly to help insure reliability and to maximize uptime in your laundry.

ADC's daily business is dryers.

We are the single source for your tumbler needs.



FEATURES



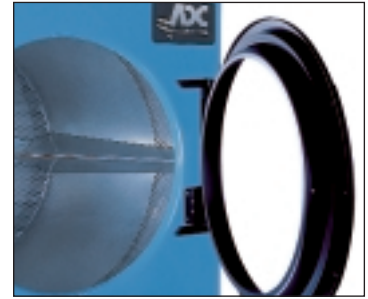
Front Service

The AD-330 and AD-320 are dual pocket dryers that offer 98% of component accessibility from the front of the tumbler. This feature enables store owners to place their dual pocket dryers virtually against the back wall without concern for regular rear maintenance.



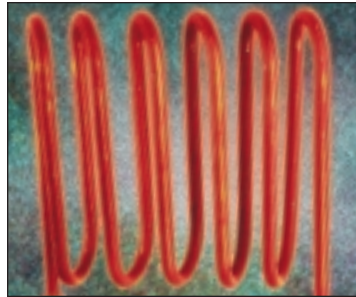
Large Easy Access Lint Drawer

Only the AD-330 and AD-320 offer an easy access lint drawer that can be cleaned by the attendant or the customer – whichever is preferred. Cleaning is so simple that it is never a chore. The large, lightweight lint drawer only requires cleaning once a day. A fine stainless steel lint screen is standard. Beware of woven fabric screens in a dual pocket application. A locked lint drawer option is available.



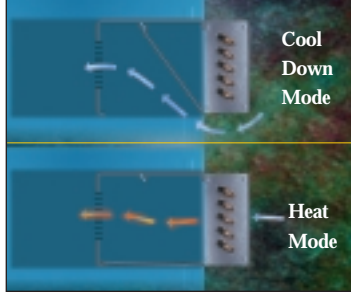
Rugged Steel Door

ADC has a rugged steel door with a gasketless glass. All other dryers use a rubberlike material to hold in their glass. This rubberlike material, through years of wear, will eventually fail, allowing the glass to fall out. ADC offers the security of a gasketless door glass.



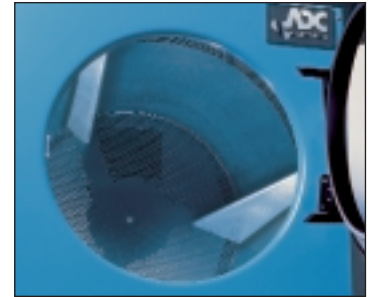
Electric-Heating

The ADE-330 and ADE-320 use sealed electric elements made of high-temperature incoloy metal. They run cooler than open-coil elements, are more efficient, and have a longer life. For safety, the surface of the tubular element is not electrified.



Steam-Heating

The ADS-330 and ADS-320 utilize a unique steam damper system. The coils stay constantly charged, eliminating repeated expansion and contraction. An open damper directs air through the hot coil for instant heat. When closed, the damper directs ambient air straight into the basket for a rapid cool down.



Dissimilar Ribs

After years of testing, ADC has designed a rib system for maximum lift and a minimum amount of balling. The AD-330 and AD-320 have two short slanted ribs and one large slanted rib. The different heights of the ribs prevent balling. The slant forces the load to shift from the back of the basket to the front for best drying results.



Totally Enclosed Motors

Only ADC offers a totally enclosed, non-vent motor on a dual pocket machine. ADC has completely eliminated the lint problems experienced with most dryer motors. Totally enclosed motors are not affected by lint, dirt, or moisture as open-type motors are.



Permanently Lubricated Ball Bearings

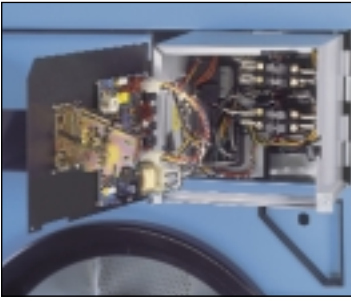
Bearings on the drive system and motor are all permanently lubricated ball bearings. There is never a need to lubricate these bearings.



Cabinet Finish

The cabinet is powder painted electrostatically inside and out and baked for 25 minutes at 420° Fahrenheit for the best finish in the industry. Most dryers are assembled and then painted only on the outside. ADC paints all its components before assembly.

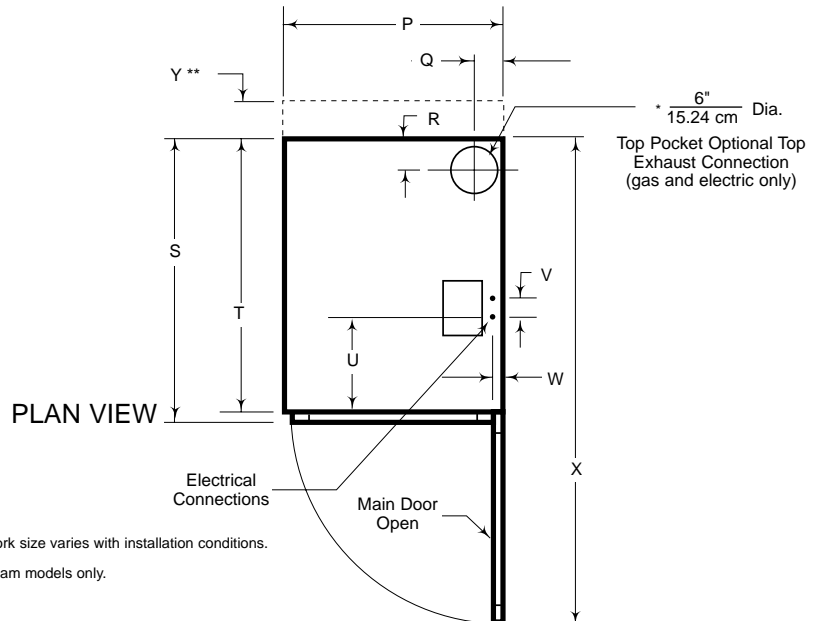
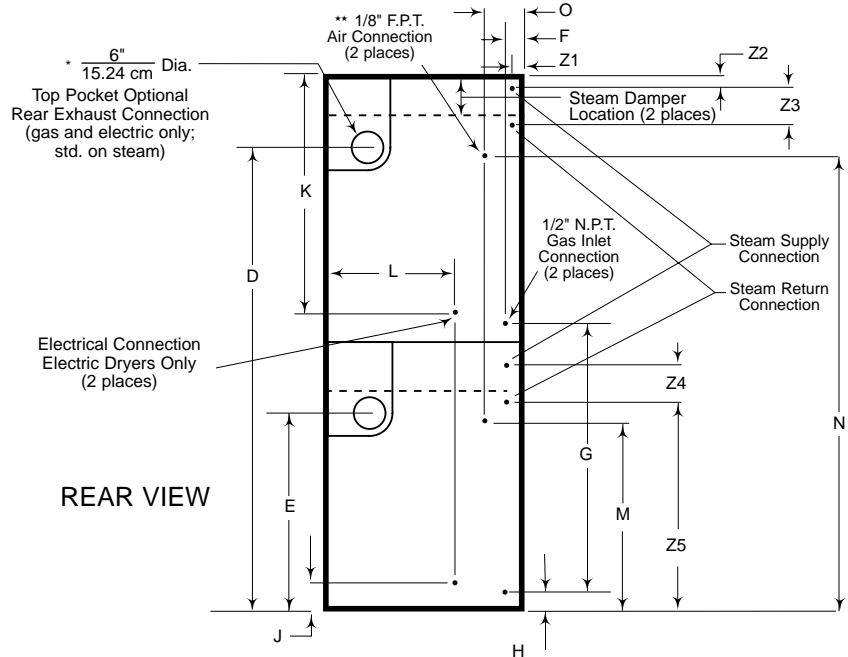
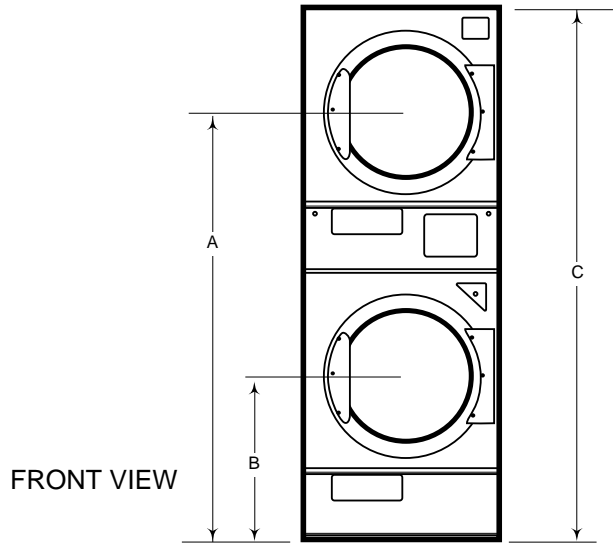
DIMENSIONS



24-Volt Controls

Safety and reliability are the hallmarks of a 24-volt control system. All major electrical components, with the exception of the motor and computer, run on a 24-volt control system, virtually eliminating electrical fires and service-related electrical shocks.

DIM	AD-330		AD-320	
A	63 ⁵ / ₈ "	161.61 cm	63 ⁵ / ₈ "	161.61 cm
B	25"	63.50 cm	25"	63.50 cm
C	78 ¹ / ₄ "	198.76 cm	78 ¹ / ₄ "	198.76 cm
D	67"	170.18 cm	67"	170.18 cm
E	28"	71.12 cm	28"	71.12 cm
F	2 ¹ / ₄ "	5.72 cm	2 ¹ / ₄ "	5.72 cm
G	38 ¹⁵ / ₁₆ "	98.90 cm	38 ¹⁵ / ₁₆ "	98.90 cm
H	2 ¹ / ₄ "	5.72 cm	2 ¹ / ₄ "	5.72 cm
J	2"	5.08 cm	2"	5.08 cm
K	36"	91.44 cm	36"	91.44 cm
L	17 ¹ / ₂ "	44.45 cm	17 ¹ / ₂ "	44.45 cm
M	23 ¹ / ₂ "	59.69 cm	23 ¹ / ₂ "	59.69 cm
N	62 ¹ / ₂ "	158.75 cm	62 ¹ / ₂ "	158.75 cm
O	6 ¹ / ₂ "	16.51 cm	6 ¹ / ₂ "	16.51 cm
P	29 ³ / ₄ "	75.57 cm	29 ³ / ₄ "	75.57 cm
Q	4 ¹ / ₁₆ "	10.32 cm	4 ¹ / ₁₆ "	10.32 cm
R	5 ⁵ / ₈ "	14.29 cm	5 ⁵ / ₈ "	14.29 cm
S	43 ³ / ₄ "	111.13 cm	38 ³ / ₄ "	98.43 cm
T	42 ³ / ₄ "	108.59 cm	37 ³ / ₄ "	95.89 cm
U	16 ¹¹ / ₁₆ "	42.39 cm	12"	30.48 cm
V	3 ¹ / ₂ "	8.89 cm	3 ¹ / ₂ "	8.89 cm
W	1 ³ / ₁₆ "	3.02 cm	1 ³ / ₁₆ "	3.02 cm
X	70 ⁷ / ₈ "	178.12 cm	65 ¹ / ₈ "	165.42 cm
Y**	6 ³ / ₁₆ "	15.72 cm	6 ³ / ₁₆ "	15.72 cm
Z1	1 ⁷ / ₁₆ "	3.65 cm	1 ⁷ / ₁₆ "	3.65 cm
Z2	1 ⁷ / ₁₆ "	3.65 cm	1 ⁷ / ₁₆ "	3.65 cm
Z3	8 ¹ / ₂ "	21.59 cm	8 ¹ / ₂ "	21.59 cm
Z4	8 ¹ / ₂ "	21.59 cm	8 ¹ / ₂ "	21.59 cm
Z5	29 ⁹ / ₈ "	75.25 cm	29 ⁹ / ₈ "	75.25 cm



* Ductwork size varies with installation conditions.

** For steam models only.

SPECIFICATIONS

AD-330

MAXIMUM CAPACITY (Total Dry Weight)		60 lbs.	27.2 kg	
BASKET DIAMETER		27 1/4"	69.22 cm	
BASKET DEPTH		30"	76.2 cm	
BASKET VOLUME (Per Basket)		10.1 cu.ft.	0.287 cu.m.	
MOTOR (Horsepower) (2 Places)		1/3 HP	0.249 kw	
DOOR OPENING (Diameter) (2 Places)		21 1/2"	54.61 cm	
AIRFLOW (Total Both Baskets)		800 cfm	22.7 cmm	
DRYERS PER 20'/40' CONTAINER		14/28		
DRYERS PER 48'/53' TRUCK		34/36		
GAS	VOLTAGE AVAILABLE		120-240v/1Ø/50/60 Hz	
	APPROX. NET WEIGHT		793 lbs. / 359.7 kg	
	APPROX. SHIPPING WEIGHT		860 lbs. / 390.1 kg	
	HEAT INPUT (Total)		136,000 btu/hr / 34,270 kcal/hr	
	INLET PIPE CONNECTION *		1/2" F.P.T.	
ELECTRIC	VOLTAGE AVAILABLE		208-416v/1,3Ø/50/60 Hz	
	OVEN SIZE			
	KW	BTU/HR	KCAL/HR	
	15	51,200	12,900	
STEAM **	VOLTAGE AVAILABLE		120-240v/1Ø/50/60 Hz	
	APPROX. NET WEIGHT		873 lbs. / 396 kg	
	APPROX. SHIPPING WEIGHT		949 lbs. / 430.5 kg	
	COMPRESSED AIR VOLUME		0.75 cfh / 0.02 cmh	
	COMPRESSED AIR CONNECTION		1/8" F.P.T.	
	STEAM CONSUMPTION		BOILER HP NORMAL LOAD	
	101 lbs/hr	45.8 kg/hr	2.9	
	OPERATING PRESSURE		* SUPPLY CONNECTION	* RETURN CONNECTION
	125 psi max	8.6 bar	1" F.P.T.	3/4" F.P.T.

* Size of piping to dryer (two places) varies with installation conditions. Contact factory for assistance.

** Steam dryer must be provided with a clean, dry, regulated 80 psi ± 10 psi (5.5 bar ± 0.69 bar) air supply.

Shaded areas are stated in metric equivalents. Specifications subject to change without notice.

AD-320

MAXIMUM CAPACITY (Total Dry Weight)		40 lbs.	18.14 kg	
BASKET DIAMETER		27 1/4"	69.22 cm	
BASKET DEPTH		25"	63.5 cm	
BASKET VOLUME (Per Basket)		8.43 cu.ft.	0.239 cu.m.	
MOTOR (Horsepower) (2 Places)		1/3 HP	0.249 kw	
DOOR OPENING (Diameter) (2 Places)		21 1/2"	54.61 cm	
AIRFLOW (Total Both Baskets)		800 cfm	22.7 cmm	
DRYERS PER 20'/40' CONTAINER		14/28		
DRYERS PER 48'/53' TRUCK		34/36		
GAS	VOLTAGE AVAILABLE		120-240v/1Ø/50/60 Hz	
	APPROX. NET WEIGHT		760 lbs. / 344.7 kg	
	APPROX. SHIPPING WEIGHT		795 lbs. / 360.6 kg	
	HEAT INPUT (Total)		120,000 btu/hr / 30,240 kcal/hr	
	INLET PIPE CONNECTION *		1/2" F.P.T.	
ELECTRIC	VOLTAGE AVAILABLE		208-416v/1,3Ø/50/60 Hz	
	OVEN SIZE			
	KW	BTU/HR	KCAL/HR	
	15	51,200	12,900	
STEAM **	VOLTAGE AVAILABLE		120-240v/1Ø/50/60 Hz	
	APPROX. NET WEIGHT		837 lbs. / 379.7 kg	
	APPROX. SHIPPING WEIGHT		884 lbs. / 401 kg	
	COMPRESSED AIR VOLUME		0.75 cfh / 0.02 cmh	
	COMPRESSED AIR CONNECTION		1/8" F.P.T.	
	STEAM CONSUMPTION		BOILER HP NORMAL LOAD	
	101 lbs/hr	45.8 kg/hr	2.9	
	OPERATING PRESSURE		* SUPPLY CONNECTION	* RETURN CONNECTION
	125 psi max	8.6 bar	1" F.P.T.	3/4" F.P.T.

* Size of piping to dryer (two places) varies with installation conditions. Contact factory for assistance.

** Steam dryer must be provided with a clean, dry, regulated 80 psi ± 10 psi (5.5 bar ± 0.69 bar) air supply.

GAS/STEAM ELECTRICAL SERVICE SPECIFICATIONS (Per Basket) ***					
IMPORTANT: 208 VAC and 230/240 VAC are not the same. When ordering, specify exact voltage.					
NOTES: A. Circuit breakers are thermal/magnetic (industrial) motor curve type ONLY . For others, calculate/verify correct breaker size according to appliance amp draw rating and type of breaker to be used.					
B. Circuit breakers for 3Ø dryers must be 3-pole type.					
SERVICE VOLTAGE	PHASE	WIRE SERVICE	APPROX. AMP DRAW		CIRCUIT BREAKER AMPERAGE
			60 Hz	50 Hz	
120	1	2	7.0	—	15
208	1	2	4.3	—	15
240	1	2	4.0	4.3	15

ELECTRIC ELECTRICAL SERVICE SPECIFICATIONS (Per Basket) ***					
IMPORTANT: 208 VAC and 230/240 VAC are not the same. When ordering, specify exact voltage.					
NOTES: A. Circuit breakers are thermal/magnetic (industrial) motor curve type ONLY . For others, calculate/verify correct breaker size according to appliance amp draw rating and type of breaker to be used.					
B. Circuit breakers for 3Ø dryers must be 3-pole type.					
SERVICE VOLTAGE	PHASE	WIRE SERVICE	APPROX. AMP DRAW		CIRCUIT BREAKER AMPERAGE
			60 Hz	50 Hz	
208	1	2	76	—	90
240	1	2	67	67	80
208	3	3/4	46	—	60
240	3	3	40	40	50
380-400	3	4	—	27	40
416	3	4	—	25	40

*** Contact factory for electrical information not listed.

AT ADC, PERFECTION IS WHAT WE HAVE IN MIND.

ADC's 275,000 sq. ft. Facility
Dryers are no sideline with us. We're dedicated to them 100% - and it shows. American Dryer Corporation is the world's leading producer of commercial clothes dryers. Coin-operated and commercial laundries in over 90 countries depend on the ADC name for reliability, innovative technology and total customer support.



Computer-Aided Design
Complex engineering concepts are transformed into reality on our advanced technology CAD system.



Computerized Lathe
ADC's state-of-the-art Twin Spindle CNC Lathe machines the shafts that are used to turn the tumblers. This ensures the tightest tolerances, providing years of trouble free performance.



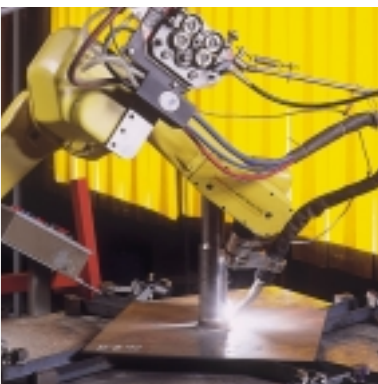
Precision Laser Cutting
ADC recently added three laser cutting machines so that all sheet metal components will be manufactured to the greatest degree of accuracy.



Automated Epoxy Coatings
ADC's robotic powder-coating line produces finishes that are tops in the industry.



Robotic Welding
ADC's multiple robotic welding stations assure that all weldments are manufactured to the highest quality standards.



Stringent Inspections
Every product built at ADC undergoes a thorough performance test and inspection. We want the product you receive to perform as expected from day one.



American Dryer Corporation
88 Currant Road, Fall River, MA 02720-4781
(508) 678-9000 FAX (508) 678-9447
sales@amdry.com www.amdry.com

Finance with **American Credit Corp.**, ext. 174
amcr@amdry.com www.amdry.com/serv01.htm